

ORMEC's MotionDesk™ Development Kit provides a complete *motion programming environment* on any PC or compatible computer running Windows 10 or compatible system. It is available as a Servo Developers version, providing software tools to simplify the configuration, development and maintenance of ORMEC motion control systems.

MotionDesk™ is a fully integrated, Windows-oriented “desktop” for motion control. It utilizes dropdown menus, toolbars and dialog boxes and presents a graphical user interface (GUI) to ORION™ controllers that is both intuitive and powerful.

### Multi-Window Development

The MotionDesk™ Development Console provides an elegant multi-window development environment that includes multiple local windows on your PC as well as a multi-window interface to your motion controller.

MotionDesk™ uses TCP/IP to implement high speed communications to the ORION motion controllers over either serial communication or Ethernet connections. TCP/IP enables the

| MotionDesk: Servo Developer's Kits                                |   |
|---|---|
| Features  |   |
| <i>Wizards for configuration and setup</i>                        | √ |
| Automatic screen-oriented system configuration                    | √ |
| <i>Development Console</i>  | √ |
| Multiple ORION Program Development Windows                        | √ |
| Program Debug Tools   | √ |
| <i>ORION file management utilities</i>                            | √ |
| Read/write files in ORION drives using RS-232 port                | √ |
| <i>Windows Help System</i>  | √ |
| Full on-line reference volume for MotionBASIC® and all ORION help | √ |
| <i>ORION Text Editor</i>  | √ |
| Full-featured program and text editor                             | √ |
| MotionBASIC® program development/ management utilities            | √ |

MotionDesk™ to simultaneously open multiple communication channels with ORION™ and provide windows to modify, control and view program operation.

### ORION™ Setup Window & Wizards

A key element of MotionDesk is the ORION™ Setup Window that simplifies the process of configuring your motion control system. It includes multiple screens for unit and axis parameters as well your MotionDATA™ and I/O configurations.

The “wizard” approach leads the user through

a series of screens that simplify configuration. You are then led through only the pertinent screens based on your prior choices.

### Text Editor

The ORION™ text editor provides powerful program editing tools and macro capabilities to speed the process of developing your program. Key features of the editor are:

- Context-sensitive menus and toolbars
- Complete text editing and file management capabilities
- Multi-level undo and automatic back-up capability
- Keystroke macros and text templates

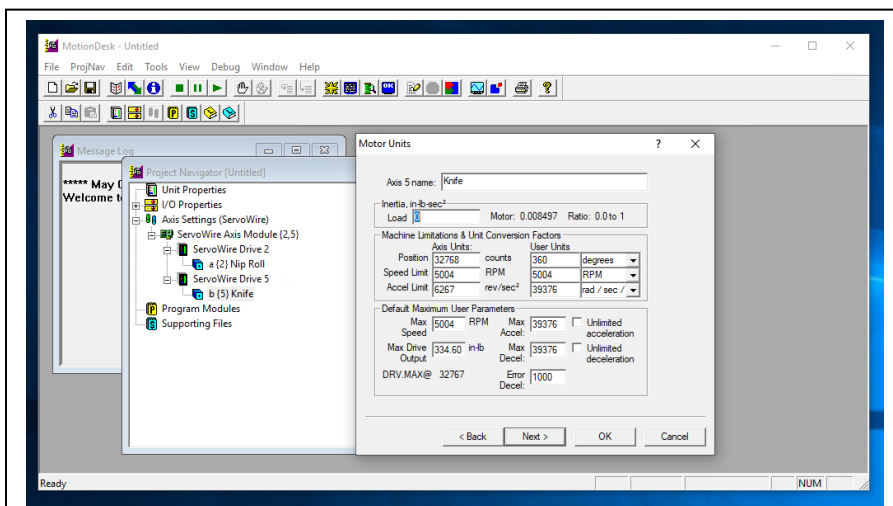


Figure 1 The MotionDesk™ Project Navigator provides effective tools for managing motion control projects. Set-up wizards lead you through a process of matching your software with the configuration of your machine.

- Colored emphasis of MotionBASIC™ keywords helps highlight programming problems while editing

### Windows Help

The MotionDesk™ Help System utilizes the latest Windows-based tools to provide on-line access to ORION™ information – MotionBASIC® reference information, MBX reference information and MotionDesk Help all in one system. Full text searching capabilities, multi-level folders which provide a graphical interface for exploring topics.

### File Management

MotionDesk™ provides a full set of file management utilities for managing ORION™ files.

### MMI-840 Development Tools

The MMI-840 Tools save development time and simplify developing operator interface screens for the MMI-840 compact industrial terminal.

These programs provide standard screens for viewing the status of system I/O and handling faults. In addition, the user can easily generate custom operator interface menus.

The I/O Display Module displays the status of up to 128 discrete input and output points using a table of names which you create, and is updated in real-time.

The Error Handler Module traps and processes error and system faults – and provides for application specific error trapping and safe shutdown procedures.

The Man-Machine Interface Module is a menuing system which you can easily configure to create operator data entry screens for your application.

All MMI-840 Tools have been written to form part of a larger

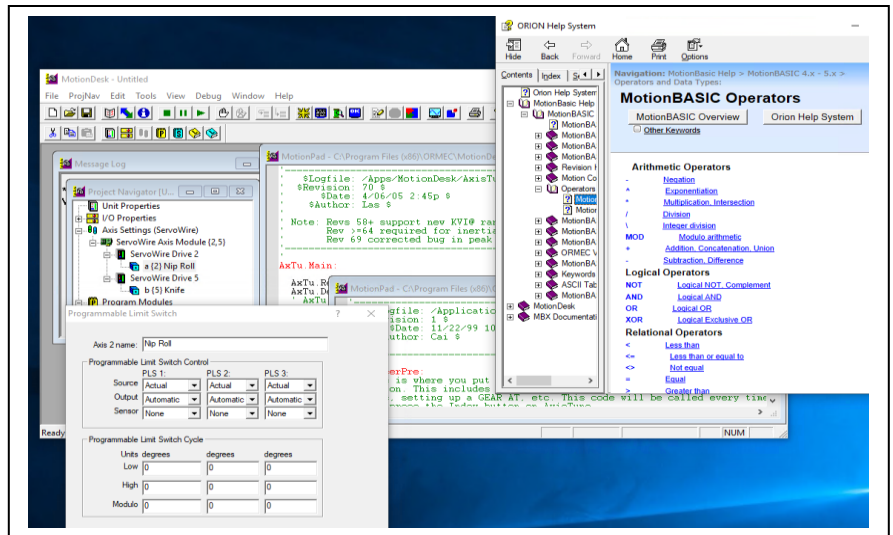


Figure 2 The ORION™ Text Editor combines sophisticated text editing capabilities with context sensitive help. Both menus and toolbar icons are context sensitive, allowing appearing when applicable. Note the two windows above are looking at different files of

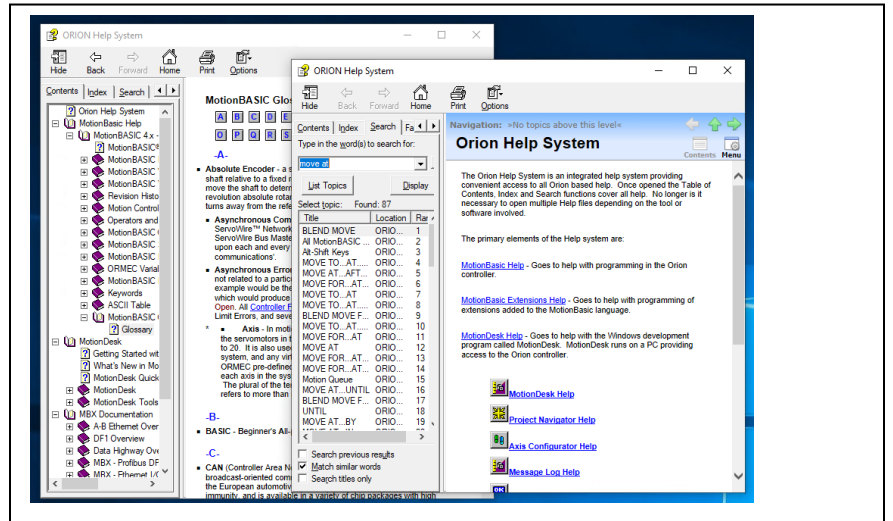


Figure 3 All help for the ORION™ is integrated into one help system, simplifying lookup. One search command finds references in MotionBASIC®, MotionDesk™ and MotionBASIC® MBXs.

### ORDERING GUIDE

|  |  |
|--|--|
| MotionDesk™ Development Software and accessories |  |
| MDK-SDK/D  | MotionDesk Servo Developer's Kit. Download version.                  |
| CBL-SER-AT-USB                                   | Serial Coil Cord, 3/11 ft, 9-pin, IBM-AT, with USB to Serial adapter |
| CBL-MOD6/15                                      | Cable, 6-wire modular, 15 ft   |
| CON-MOD6-AT                                      | Connector from CBL-MOD6 to IBM-AT (9-pin)                            |
| CON-MOD6-PC                                      | Connector from CBL-MOD6 to IBM-PC (25-pin)                           |

application program. Configuration information is contained in a single block of DAYA statements and is

easily adapted to a particular application.